

Guide to Assembly & Usage

265kg Industrial Shelving Bay

Information
If in doubt, contact the supplier

Read this Guide thoroughly before commencing assembly & retain for future reference

Before commencing assembly, unpack carefully & check that all components ordered are included

Assembly should be undertaken by two competent people

Tools – Rubber faced mallet, screwdriver, or other flat bladed tool

Caution
During assembly, ensure to:

Take care during assembly & in use, particularly when lifting or stretching & when using tools

Wear suitable protective clothing - protective gloves and footwear are recommended

Assemble & locate for use on a suitable level floor surface. Allow adequate working space

Dispose of packaging materials responsibly

Warning
Rules for the safe use of shelving:

Ensure these instructions are retained for reference & that users are aware of the rules for safe use

NEVER CLIMB ON THE STRUCTURE OR STAND ON THE SHELVES

DO NOT LEAN OR SUPPORT LADDERS, STEPS, OR OTHER OBJECTS AGAINST SHELVING

DO NOT USE IN DAMP OR WET CONDITIONS

LOAD HEAVY ITEMS ON THE LOWER SHELVES & LIGHTER ITEMS ON THE HIGHER SHELVES

ENSURE THAT THE MAXIMUM LOAD CARRYING CAPACITIES ARE NOT EXCEEDED

PLEASE REFER TO THE LOADING CHART SUPPLIED FOR DETAILS

WE RECOMMEND THIS PRODUCT IS FIXED TO THE WALL



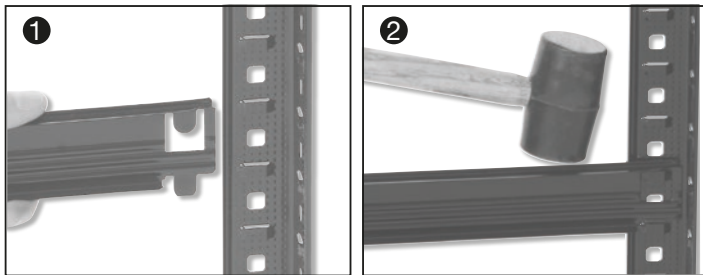
*UDL = Uniformly Distributed Load

COMPONENT CHECK LIST		Quantity
Component		
Upright		8
Front & Back Beam		10
Side Beam		10
Centre Support		5
Chipboard		5
Upright Connector		4
Feet		4

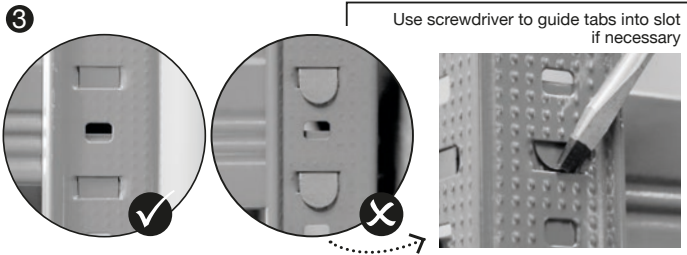
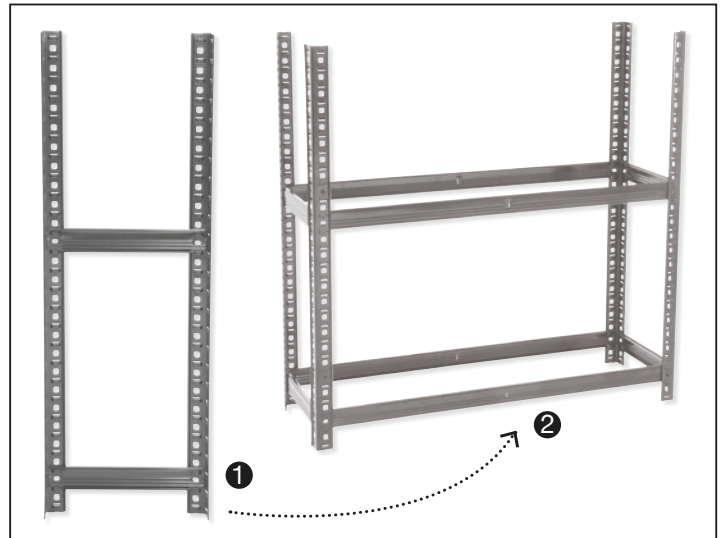
If you have any missing components please take note of the part name and code and contact your supplier

265kg Industrial Shelving Bay Assembly

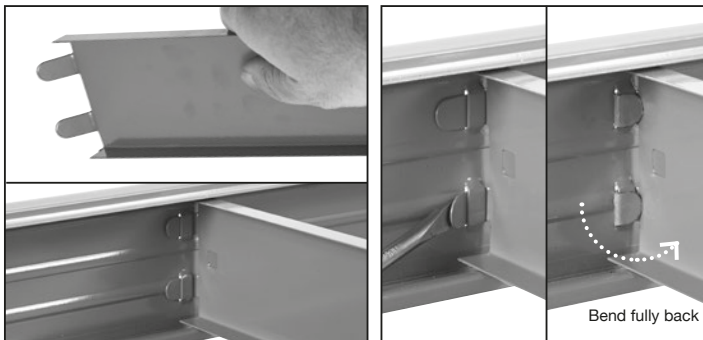
1. Slot first short beam into post. Tap into place with rubber mallet



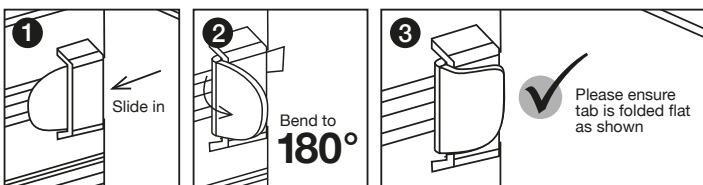
2. Assemble end frames with short side beams & join with long front & back beams



3. Bend centre support ends at right angles. Slot into front & back beams.

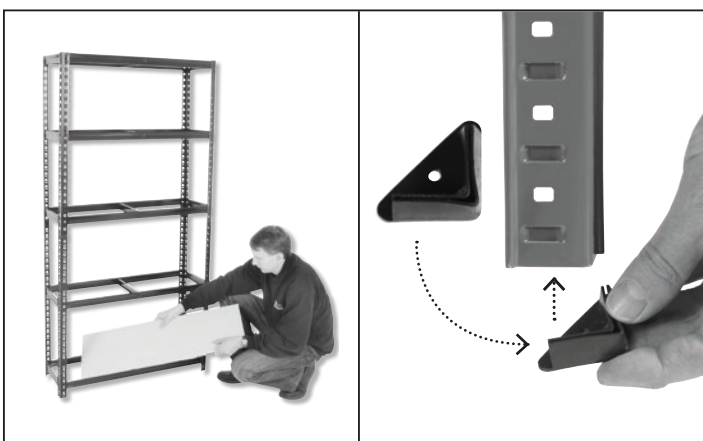


4. Slot upright connector into top of lower upright. Push top into place or tap down with mallet if necessary



5. Repeat steps 2-3 to add remaining levels & insert chipboard decks

6. Push plastic protective feet onto each post

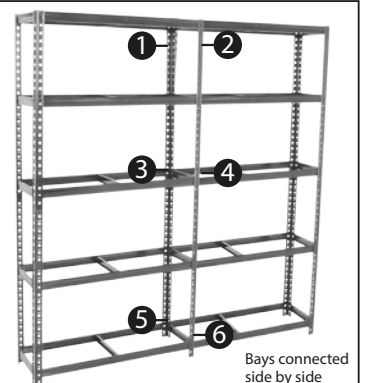


ACCESSORIES ALSO AVAILABLE

Bay Connectors

One set of 6 Bay Connectors joins 2 bays side by side or back to back for added stability

Code BC16



HOW TO FIT BAY CONNECTORS



LOADING CHART

Max load	Weight in kilograms
Per shelf	265KG UDL
Per bay	1325KG UDL

All weight loadings relate to UDL (uniformly distributed loads).
The load capacity will be reduced if the shelves are loaded unevenly.