

Guide to Assembly & Usage

Light Duty Workbench

- Information**
If in doubt, contact the supplier
- Read this Guide thoroughly before commencing assembly & retain for future reference
- Before commencing assembly, unpack carefully & check that all components ordered are included
- Assembly should be undertaken by two competent people
- Tools – Rubber faced mallet, screwdriver, or other flat bladed tool
- Caution**
During assembly, ensure to:
- Take care during assembly & in use, particularly when lifting or stretching & when using tools
- Wear suitable protective clothing – protective gloves and footwear are recommended
- Assemble & locate for use on a suitable level floor surface. Allow adequate working space
- Dispose of packaging materials responsibly
- Warning**
Rules for the safe use of workbenches:
- Ensure these instructions are retained for reference & that users are aware of the rules for safe use
- NEVER CLIMB ON THE STRUCTURE OR STAND ON THE SHELVES
- DO NOT LEAN OR SUPPORT LADDERS, STEPS, OR OTHER OBJECTS AGAINST SHELVING
- DO NOT USE IN DAMP OR WET CONDITIONS
- LOAD HEAVY ITEMS ON THE LOWER SHELVES & LIGHTER ITEMS ON THE HIGHER SHELVES
- ENSURE THAT THE MAXIMUM LOAD CARRYING CAPACITIES ARE NOT EXCEEDED
- PLEASE REFER TO THE LOADING CHART SUPPLIED FOR DETAILS
- WE RECOMMEND THIS PRODUCT IS FIXED TO THE WALL

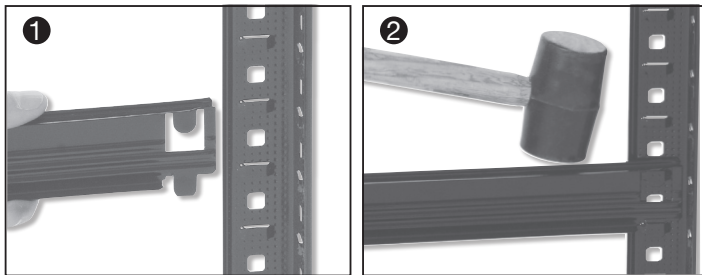
*UDL = Uniformly Distributed Load

COMPONENT CHECK LIST		
Component	Quantity	1780h x 900w x 600d
Upright	4	SP-D1
Front & Back Beam	4	SP-C1
Side Beam	4	SP-B3
Centre Support	2	SP-A3
Chipboard	2	SP-chipC
Feet	4	SP-RB1

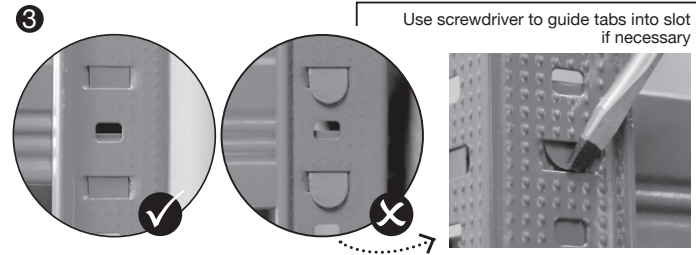
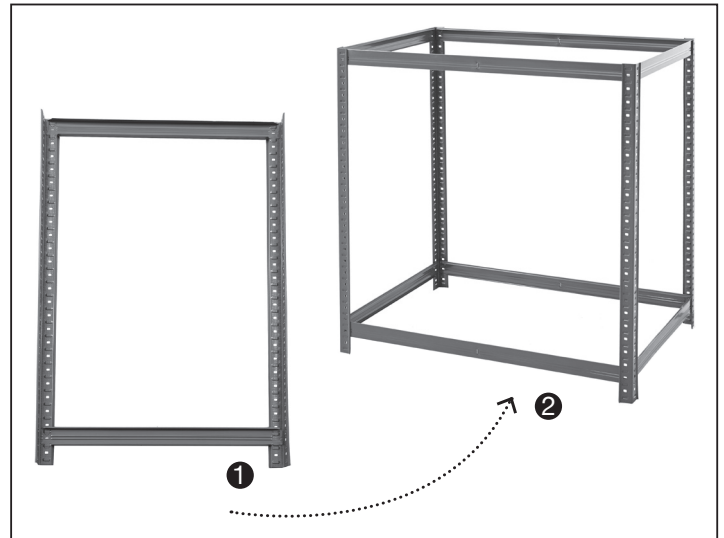
If you have any missing components please take note of the part name, code and colour and contact your supplier

Light Duty Workbench Assembly

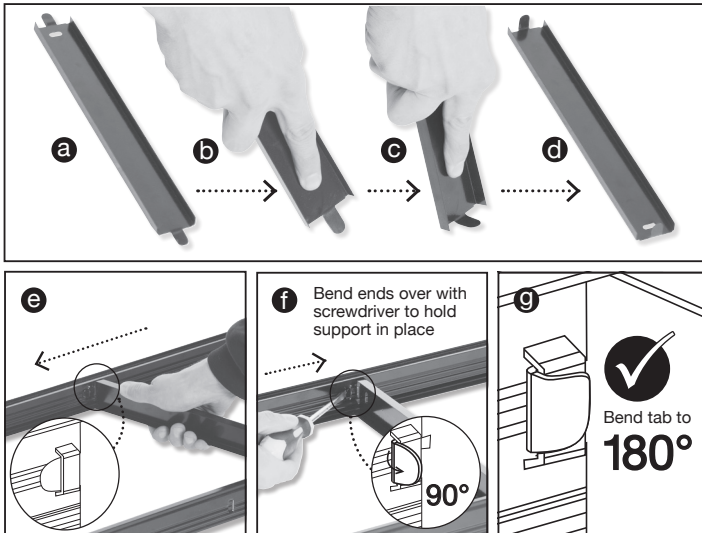
1. Slot first short beam into post. Tap into place with rubber mallet



2. Assemble end frames with short side beams & join with long front & back beams

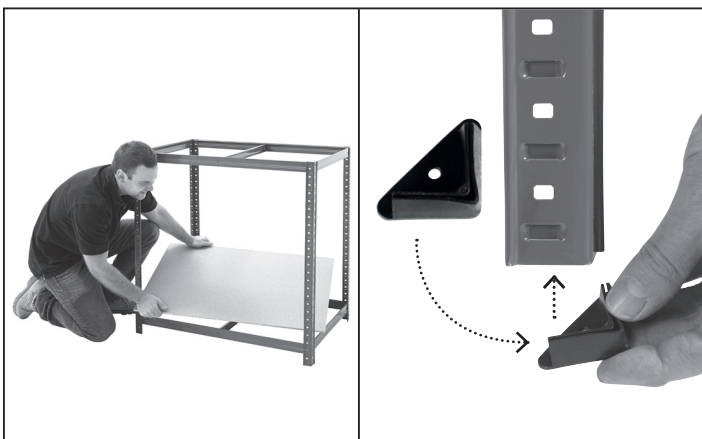


3. Bend centre support ends at right angles. Slot into front & back beams.



4. Repeat steps 2-3 to add remaining level & insert chipboard decks

5. Push plastic protective feet onto each post

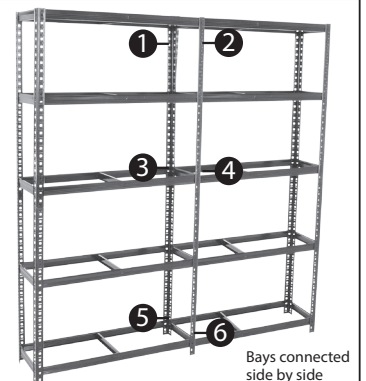


ACCESSORIES ALSO AVAILABLE

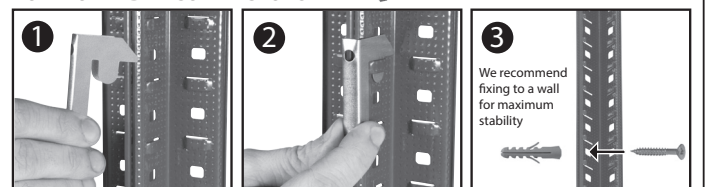
Bay Connectors

One set of 6 Bay Connectors joins 2 bays side by side or back to back for added stability

Code BC16



HOW TO FIT BAY CONNECTORS



LOADING CHART	
Max load	Weight in kilograms
Per shelf	175KG UDL
Per bay	350KG UDL

All weight loadings relate to UDL (uniformly distributed loads).
The load capacity will be reduced if the shelves are loaded unevenly.